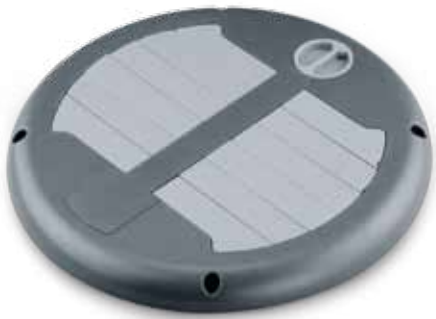


Internal Valve



"V12"    colours

OPTIONAL

- Electrical

TECHNICAL DETAILS

Part. No.	Description	Remarks	Colour Valve/Cover	Colour Louver/Knob	Overall Diameter	Material	Weight kg
35-2400	Internal Valve	Manual	White	White	290	ABS	0,5
35-2410	Internal Valve	Manual	Grey	Grey	290	ABS	0,5
35-2440	Internal Valve	Manual	Dark Grey	Grey	290	ABS	0,5
35-2500	Internal Valve	Electric 12V/24V	White	White	290	ABS	0,6
35-2510	Internal Valve	Electric 12V/24V	Grey	Grey	290	ABS	0,6
35-2540	Internal Valve	Electric 12V/24V	Dark Grey	Grey	290	ABS	0,6